



The device allows to block a pipeline leak within 5 minutes without turning off the pressure

After applying welds, it is a permanent installation device

Repair fitting

Size range, mm (inch), without adjustment	Max Working pressure Pp, MPa	Product	Temperature, C° of the product	Material	Climatic modification according to GOST 15150
From 89 to 630 (from 3' to 24')	10,0	Oil Gas Water Steam	From -40 to +140	09G2S 10HSND 13HFA 10G2FBYU	U, HL, UHL, T, M, O, OM, W

Priorities for the development of TECHSYSTEMA Research and Production Enterprise:

- Active participation in the development and creation of new technologies related to the performance of repair work on pipelines under pressure
- Implementation of modern methods and diagnostic tools, technical devices and equipment that increase the efficiency and maximum safety of work
- Improving the qualifications of employees and the competence of the management staff in accordance with the requirements and quality standards of Russian and international organizations.



Sovetskaya street, 35,
Balashikha city, Moscow region,
Russia

+7 (495) 320-30-60

Export department:
+7 (939) 900-81-53

e-mail: info@techsystema.com
www.techsystema.com



REPAIR AND LEAKAGE
ELIMINATION COMPLEX
FOR PIPELINE UNDER
PRESSURE UP TO 10.0 MPa

KUPOL



PURPOSE

- Fast elimination of emergency leaks
- Cutting out defects, repair chops
- Reinforcement of damaged areas

ADVANTAGES

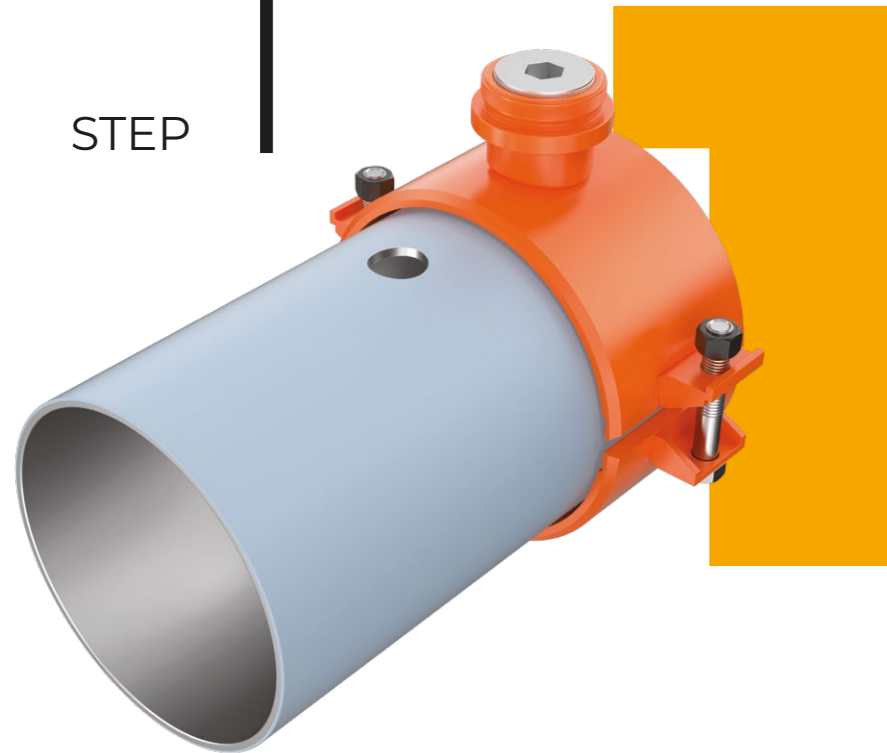
- Operation without shutting off the product supply through the pipeline
- Medium: Oil / Gas / Water / Steam
- Pressure up to 10.0 MPa
- Pipelines from 89 to 630 mm
- Product of permanent installation
- Quality certificates
- Development / manufacturing of non-standard sizes
- **Made in Russia — high quality**
- Compatible with equipment from other manufacturers

up to **10 MPa**



www.techsystema.com

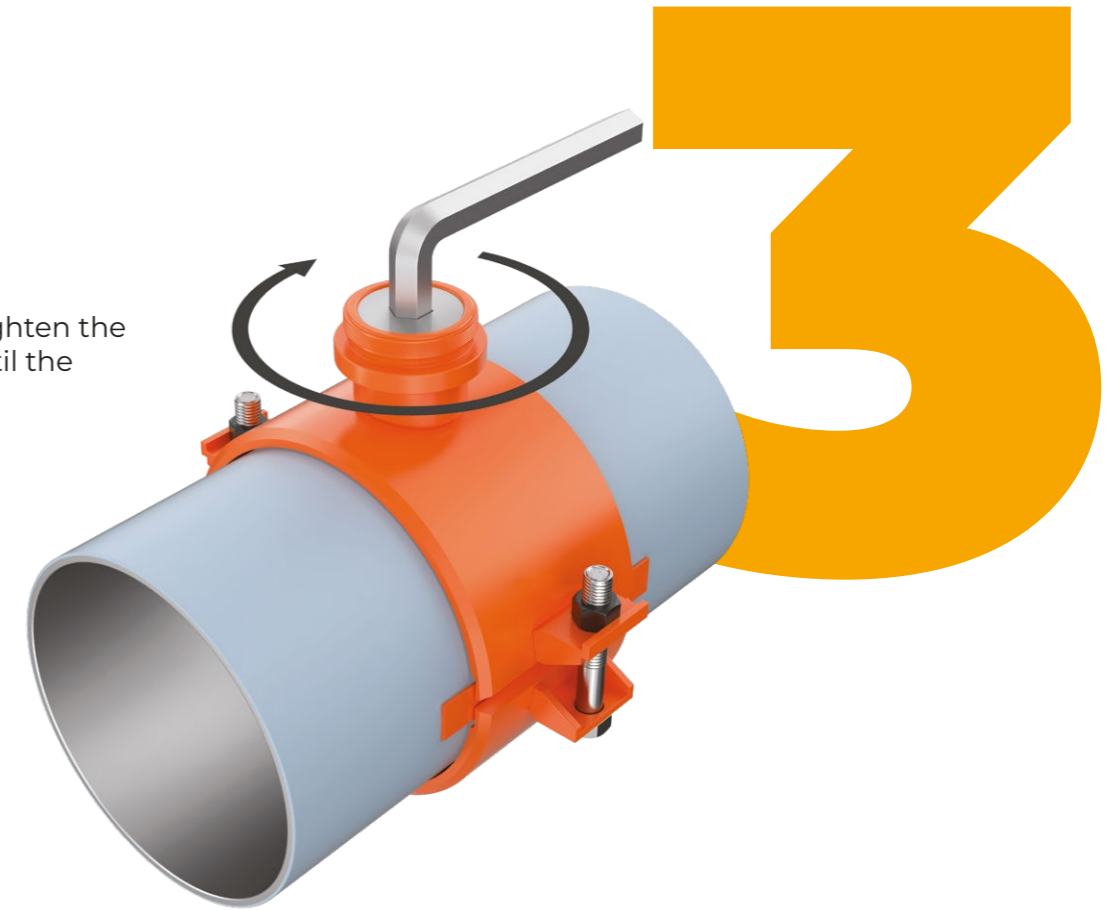
STEP 1



PREPARATION FOR THE INSTALLATION OF THE REPAIR FITTING

- install a repair fitting (clamp) next to the hole;
- fasten the bolts on the studs so that the clamp moves freely along the pipe;
- positioning the neck of the fitting relative to the repaired hole.

STEP 3



LEAK CLOSURE

- with a hex wrench, tighten the plug of the fitting until the leakage stops.

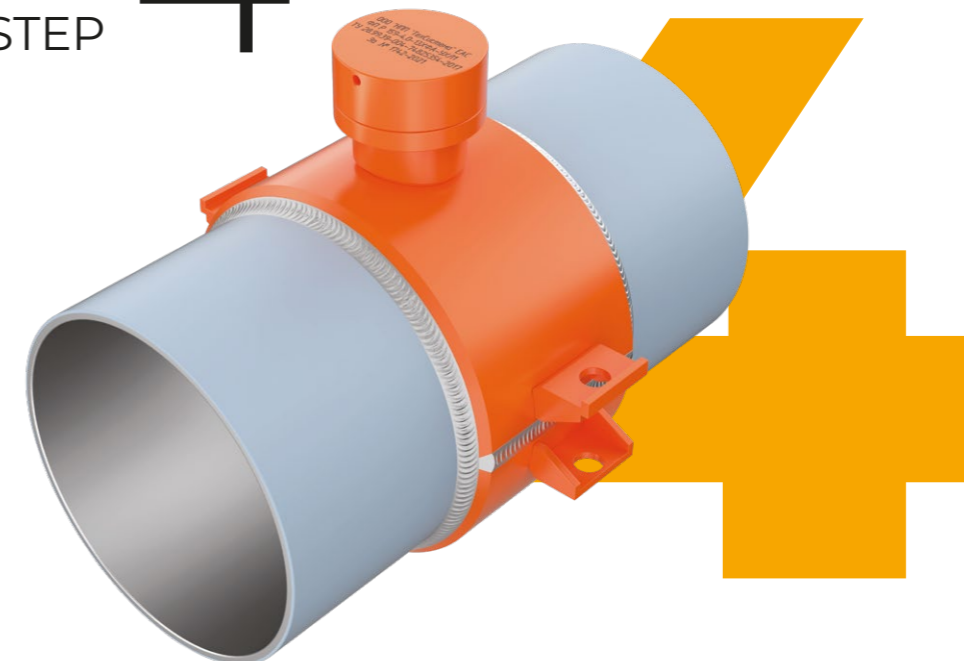
STEP 2



REPAIR FITTING INSTALLATION

- move the pre-assembled fitting in such a way that the neck is above the hole;
- install backing plates in a special gap between the shells;
- tighten the bolts on the studs on both sides until they stop.

STEP 4



WELDING THE FITTING TO THE PIPE

- prepare the surface of the pipe for welding;
- make circumferential and longitudinal welds between the shells and the pipe;
- if necessary, weld the fitting cover.

